



SUREFLOW METAL SEATED GATE VALVE, 16 BAR
Flanged ends, drilling to AS4087 B5, stem cap, CC/ACC, DN 80-300

2580/90

Sureflow metal seated wedge gate valves are primarily designed for flow isolation of a length of pipeline or piece of equipment. It uses a ductile iron gate that houses bronze rings to ensure a watertight seal.

Product description:

Metal seat gate valve for water, sewage and neutral liquids to max. 70°C

Standards:

- Designed according to AS2638.1
- Flange connections to AS4087 figure B5

Production Tests:

- Seat: 1.1 x PN. Body: 1.5 x PN.

Features:

- Bronze wedge nut with self-lubricating abilities providing optimum compatibility with stem
- The face ring which is firmly secured to the wedge is machined to a fine surface finish to ensure optimum contact seal with body seat ring
- Wedge with guides, which ensure uniform closure
- A large through bore housing for the stem in the wedge prevents stagnant water or impurities
- Stainless steel stem and bolts for increased corrosion resistance
- Seal housing incorporates inner/outer O-ring seals and wiper ring for long life operation
- Stem sealing replaceable under pressure
- Round bonnet gasket fixed in a recess groove in bonnet preventing it from being blown out by pressure surges
- Bonnet bolts encircled by the bonnet gasket and gland bolts encircled by O-ring, thus there is no risk of corrosion
- Full bore
- Blue fusion bonded epoxy according to AS4158

Accessories:

Handwheel



Quality
 ISO 9001
 SAI GLOBAL



Health & Safety
 AS 4801
 SAI GLOBAL



Environment
 ISO 14001
 SAI GLOBAL



Australian
 Standard
 AS2638.1
 Lic. SMK02420
 SAI Global



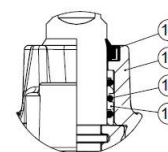
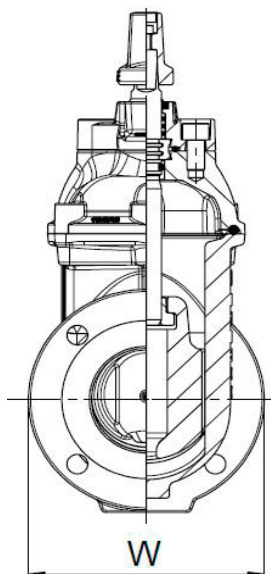
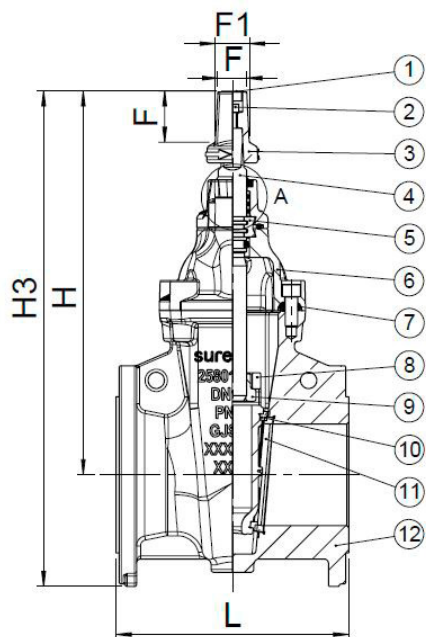
WaterMark
 Lic. WMKA 02420
 SAI Global



sureflow®

SUREFLOW METAL SEATED GATE VALVE, 16 BAR**2580/90**

Flanged ends, drilling to AS4087 B5, stem cap, CC/ACC, DN 80-300



DETAIL A

DN Size	No. of Turns to close
080	7.7±0.3
100	9.7±0.3
150	13.9±0.3
200	18.1±0.3
225	21±0.3
250	23.1±0.3
300	26.2±0.3

Component list:

1. Insert	Plastic	9. Wedge nut	Bronze CC331G (AB1)
2. Bolt	Stainless steel A4-70	10. Face ring	Bronze CC491K (LG2)
3. Stem Cap	Ductile iron GJS-500-7 (GGG-50)	11. Seat ring	Bronze CC491K (LG2)
4. Stem	Stainless steel 1.4057	12. Body	Ductile iron GJS-500-7 (GGG-50)
5. Thrust collar	Brass, DZR CW602N (CZ132)	13. Seal retainer	Bronze CC491K (LG2)
6. Bonnet	Ductile iron GJS-500-7 (GGG-50)	14. O-ring	NBR rubber
7. Bonnet gasket	EPDM rubber	15. Gland flange	Ductile iron GJS-500-7 (GGG-50)
8. Wedge	Ductile iron GJS-500-7 (GGG-50)	16. Wiper ring	NBR - Rubber

Components can be substituted with equivalent or higher class materials without prior notification.

Reference nos. and dimensions:

AVK ref. nos.	DN mm	Closing Direction	L mm	W mm	H mm	H3 mm	F mm	F1 mm	F2 mm	Theoretical weight/kg
2580-080-90-250012	80	CC	203	185	346	446	28.5	33.5	50	19
2580-080-90-350012	80	ACC	203	185	346	446	28.5	33.5	50	19
2580-100-90-250012	100	CC	229	215	378	488	28.5	33.5	50	26
2580-100-90-350012	100	ACC	229	215	378	488	28.5	33.5	50	26
2580-150-90-250012	150	CC	267	280	467	609	28.5	33.5	50	45
2580-150-90-350012	150	ACC	267	280	467	609	28.5	33.5	50	45
2580-200-90-250012	200	CC	292	335	597	767	29	35	58	77
2580-200-90-350012	200	ACC	292	335	597	767	29	35	58	77
2580-225-90-250012	225	CC	305	370	658	843	29	35	58	99
2580-225-90-350012	225	ACC	305	370	658	843	29	35	58	99
2580-250-90-250012	250	CC	330	405	670	873	29	35	58	107
2580-250-90-350012	250	ACC	330	405	670	873	29	35	58	107
2580-300-90-250012	300	CC	356	455	751	978	29	35	58	149
2580-300-90-350012	300	ACC	356	455	751	978	29	35	58	149



**SUREFLOW GATE VALVE, METAL SEATED, PN35
CC/ACC, Stem Cap, AS/NZS 4087 B6, DN80-300**

2580/80-001

Sureflow metal seated wedge gate valves are primarily designed for the flow isolation of a length of pipeline or piece of equipment. It uses a ductile iron gate that houses bronze rings to ensure a watertight seal.

Product description:

Metal seated gate valve for water, sewage and neutral liquids to max. 70°C.

Standards:

- Designed to: AS/NZS 2638.1
- Face to face: AS/NZS 2638.1
- Flange drilling: AS/NZS 4087 B6

Test/Approvals:

- Seat: 1.1 x PN (in bar), Body: 2 x PN (in bar). Operation torque test.
- StandardsMark and WaterMark approved to AS/NZS 2638.1

Features:

- Bronze wedge nut with lubricating abilities providing optimum compatibility with stem
- The face ring that is firmly secured to the wedge is machined to a fine surface finish to ensure optimum contact seal with body seat ring
- Wedge with guides, which ensures a uniform closure
- A large through bore housing for the stem in the wedge prevents stagnant water or impurities
- Stainless steel stem and bolts for increased corrosion resistance
- Seal housing incorporates inner/outer o-ring seals and wiper ring for long life operation
- Stem sealing replaceable under pressure
- Round bonnet gasket fixed in a recess to prevent blowout with integral bolt sealing
- Full bore
- Blue fusion bonded epoxy coating according to AS/NZS 4158
- Potable Water approval to AS/NZS 4020

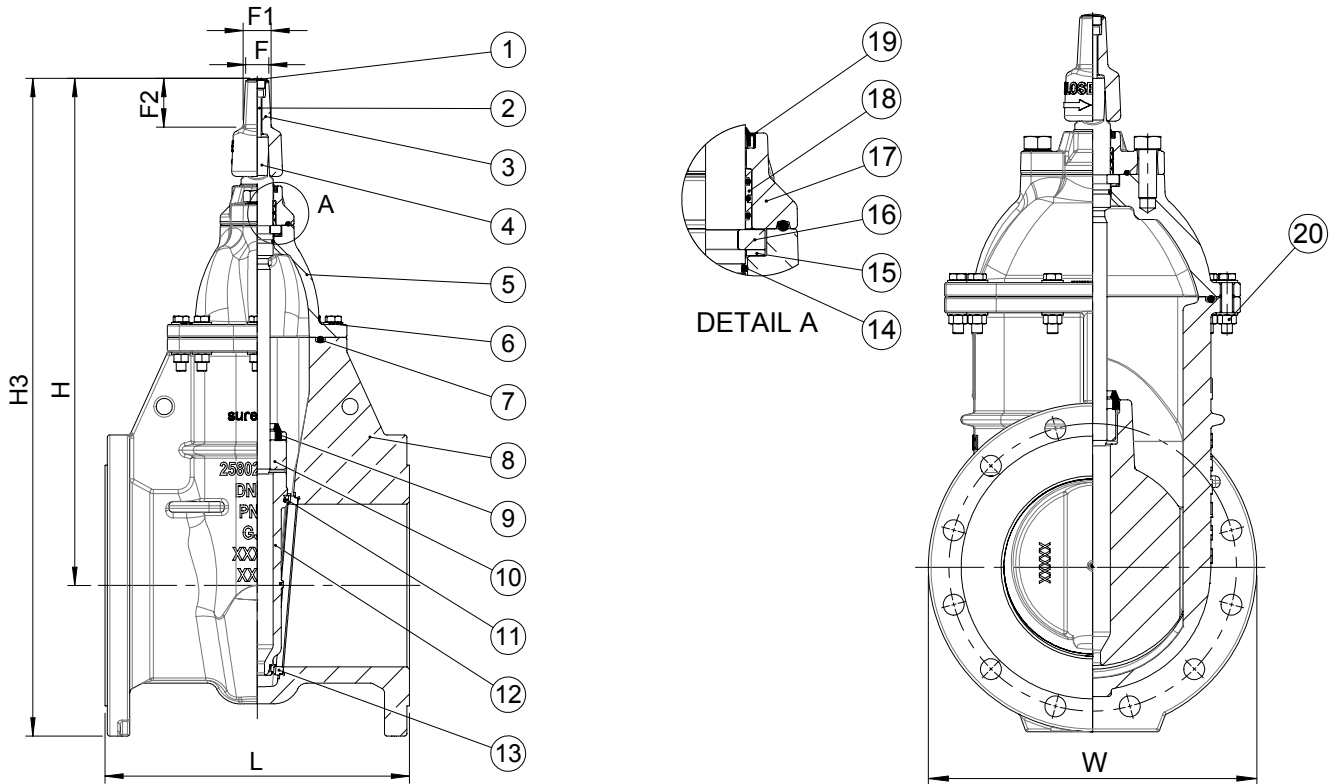
Accessories:

ISO Mount & Gearbox, Handwheel



SUREFLOW GATE VALVE, METAL SEATED, PN35
CC/ACC, Stem Cap, AS/NZS 4087 B6, DN80-300

2580/80-001



Component list:

1. Insert	Plastic	11. Face ring	Bronze CC491K (LG2)
2. Bolt	Stainless steel A4-70	12. Wedge	Ductile iron GJS-500-7 (GGG-50)
3. Stem Cap	Ductile iron GJS-500-7 (GGG-50)	13. Seat ring	Bronze CC491K (LG2)
4. Stem	Stainless steel 431	14. O-ring	NBR rubber
5. Bonnet	Ductile iron GJS-500-7 (GGG-50)	15. Thrust washer	Bronze CC491K (LG2)
6. Washer	Stainless steel A4-70	16. Thrust collar	Stainless steel 316
7. O-cord ⁽¹⁾	NBR Rubber	17. Gland flange	Ductile iron GJS-500-7 (GGG-50)
8. Body	Ductile iron GJS-500-7 (GGG-50)	18. Seal retainer	Bronze CC491K (LG2)
9. Backseal grommet	NBR Rubber	19. Wiper ring	NBR Rubber
10. Wedge Nut	Alu-bronze C95810	20. Nut	Stainless steel A4-70

Components can be substituted with equivalent or higher class materials without prior notification.

(1) DN80-150 is bonnet gasket EPDM Rubber and DN200-300 is O-Cord NBR Rubber

Reference nos. and dimensions:

Sureflow ref. nos.	DN mm	Closing Direction	L mm	W mm	H mm	H3 mm	F mm	F1 mm	F2 mm	Theoretical weight/kg
2580-080-80-270412	80	CC	280	205	368	471	28.5	33.5	50	27
2580-080-80-370412	80	ACC	280	205	368	471	28.5	33.5	50	27
2580-100-80-270412	100	CC	305	230	404	521	28.5	33.5	50	35
2580-100-80-370412	100	ACC	305	230	404	521	28.5	33.5	50	35
2580-150-80-270412	150	CC	330	305	485	638	28.5	33.5	50	65
2580-150-80-370412	150	ACC	330	305	485	638	28.5	33.5	50	65
2580-200-80-270412	200	CC	380	370	624	809	29	35	57	115
2580-200-80-370412	200	ACC	380	370	624	809	29	35	57	115
2580-225-80-270412	225	CC	405	405	701	904	29	35	57	159
2580-225-80-370412	225	ACC	405	405	701	904	29	35	57	159
2580-250-80-270412	250	CC	420	430	714	929	29	35	57	167
2580-250-80-370412	250	ACC	420	430	714	929	29	35	57	167
2580-300-80-270412	300	CC	430	490	809	1054	29	35	57	254
2580-300-80-370412	300	ACC	430	490	809	1054	29	35	57	254



SUREFLOW METAL SEATED GATE VALVE, PN35
CC/ACC, ISO Mounting Flange (Stem Cap), AS/NZS 4087 B6, S&C, DN375-600

2580/82-004

Sureflow metal seated wedge gate valves are primarily designed for the flow isolation of a length of pipeline or piece of equipment. It uses a ductile iron gate that houses bronze rings to ensure a watertight seal.

Product description:

Metal seat gate valve for water, sewage and neutral liquids to max. 70°C

Standards:

- Designed to: AS/NZS 2638.1
- Face to Face: AS/NZS 2638.1
- Flange drilling: AS/NZS 4087 B6

Test/Approvals:

- Seat: 1.1 x PN. Body: 1.5 x PN
- StandardsMark and WaterMark approved to AS/NZS 2638.1

Features:

- Bronze wedge nut with lubricating abilities providing optimum compatibility with stem
- The wedge face ring is machined to a fine surface finish to ensure optimum compatibility with body seat rings
- Wedge with guides, which ensures a uniform closure
- Copper alloy shoes and channels provide low friction guides for the wedge when opening and closing
- A large through bore housing for the stem in the wedge prevents stagnant water or impurities
- Stainless steel stem and bolts for increased corrosion resistance
- Stainless steel thrust washer, bronze thrust collar and thrust bearing provides stem stability and low free running torque
- Seal housing incorporates inner/outer o-ring seals and wiper ring for long life operation
- Stem sealing replaceable under pressure
- Backseal grommet and stem O-ring serve as main hydraulic seal to the flow
- Round bonnet gasket is fixed in a recess to prevent blowout, and includes integral o-rings for bolt sealing
- Full bore
- Lifting eyes for easy handling
- Blue fusion bonded epoxy coating according to AS/NZS 4158
- Potable Water Approval to AS/NZS 4020

Accessories:

Gearbox, actuator, handwheel



Red Cap equals CC



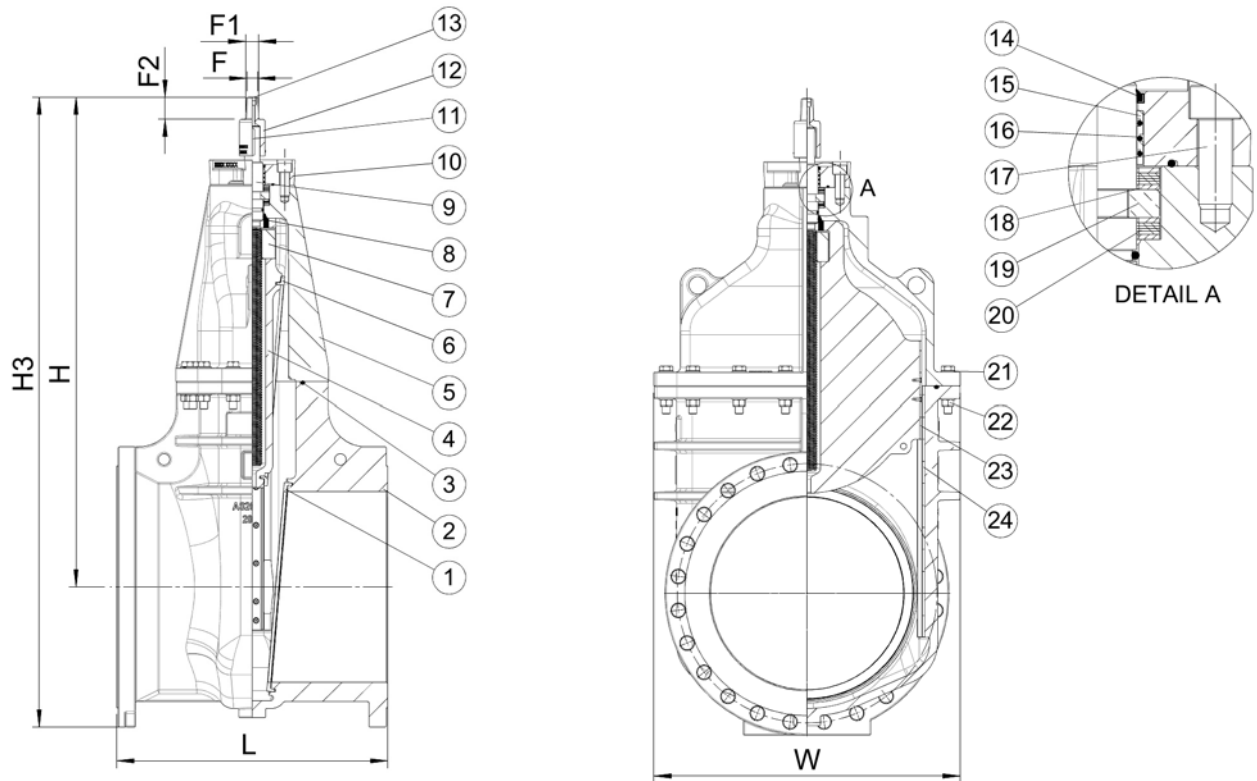
The designs, materials and specifications shown are subject to change without notice due to the continuous development of our product range.



SUREFLOW METAL SEATED GATE VALVE, PN35

2580/82-004

CC/ACC, ISO Mounting Flange (Stem Cap), AS/NZS 4087 B6, S&C, DN375-600



Component list:

1. Seat ring	Bronze CC491K (LG2)	13. Insert	Plastic
2. Body	Ductile iron GJS-500-7 (GGG-50)	14. Wiper ring	NBR rubber
3. O-cord	NBR rubber	15. Seal retainer	Bronze CC491K (LG2)
4. Wedge	Ductile iron GJS-500-7 (GGG-50)	16. O-ring ⁽¹⁾	NBR rubber
5. Bonnet	Ductile iron GJS-500-7 (GGG-50)	17. Bolt	Stainless steel A4-70
6. Face ring	Bronze CC491K (LG2)	18. Thrust washer	Stainless steel 431
7. Wedge nut	Alu-bronze C95810	19. Thrust collar	Alu-bronze C95810
8. Backseal grommet	NBR rubber	20. Thrust bearing	Steel, PTFE coated
9. Stem	Stainless steel 431	21. Washer	Stainless steel A4-70
10. Gland flange	Ductile iron GJS-500-7 (GGG-50)	22. Nut	Stainless steel A4-70
11. Key	Stainless steel A4-70	23. Shoe	Bronze CC491K (LG2)
12. Stem cap	Ductile iron GJS-500-7 (GGG-50)	24. Channel	Bronze CC491K (LG2)

Components may be substituted with equivalent or higher class materials without prior notification.

* (1) Also can be EPDM rubber

Reference nos. and dimensions:

Ref. no.	DN mm	Operating Direction	ISO Flange	L mm	W mm	H mm	H3 mm	F mm	F1 mm	F2 mm	Theoretical weight/kg
2580-375-82-270312	375	CC	F14	610	650	1079	1369	29	35	57	519
2580-375-82-370312	375	ACC	F14	610	650	1079	1369	29	35	57	519
2580-450-82-270312	450	CC	F14	660	728	1197	1535	29	35	57	683
2580-450-82-370312	450	ACC	F14	660	728	1197	1535	29	35	57	683
2580-500-82-270312	500	CC	F16	710	794	1283	1651	29	35	57	842
2580-500-82-370312	500	ACC	F16	710	794	1283	1651	29	35	57	842
2580-600-82-270312	600	CC	F16	785	934	1442	1867	29	35	57	1314
2580-600-82-370312	600	ACC	F16	785	934	1442	1867	29	35	57	1314

The designs, materials and specifications shown are subject to change without notice due to the continuous development of our product range.